



Fresh Bros

Sample 725-021224-029

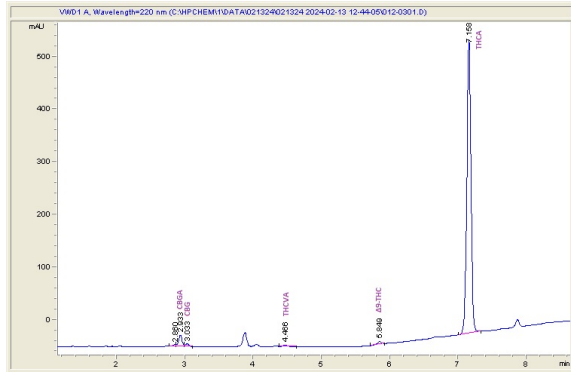
Gorilla Glue #4 - Hybrid

Sample Submitted: 02-12-2024; Report Date: 02-20-2024

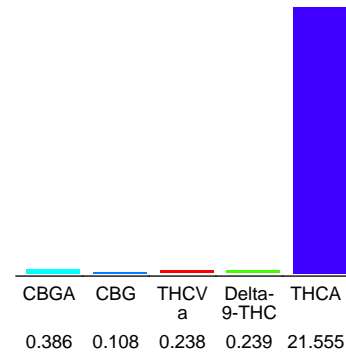
### Gorilla Glue #4 - Hybrid

Plant Material: Hemp Flower

#### Chromatogram



#### Cannabinoid Profile



#### Cannabinoid Profile by HPLC

0.24%

Delta-9-THC

0.00%

CBD

22.53%

Total Cannabinoids

Cannabinoid	% wt	mg/g
CBGA	0.386	3.86
CBG	0.108	1.08
THCVa	0.238	2.38
Delta-9-THC	0.239	2.39
THCA	21.56	215.55
<b>Total Cannabinoids</b>	<b>22.53</b>	<b>225.3</b>
<b>Calculated Total THC</b>	<b>19.14</b>	<b>191.43</b>
<b>Calculated CBD Yield</b>	<b>0.00</b>	<b>0.00</b>

Calculated Total THC = Delta-9-THC + 0.877 \* THCA  
 Calculated Maximum CBD Yield = CBD + 0.877 \* CBDA

**Marin Analytics, LLC**

250 Bel Marin Keys Blvd, Suite D4  
 Novato, CA 94949

833-321-TEST / info@marinanalytics.com

**Mike Clemmons**  
 Lab Manager